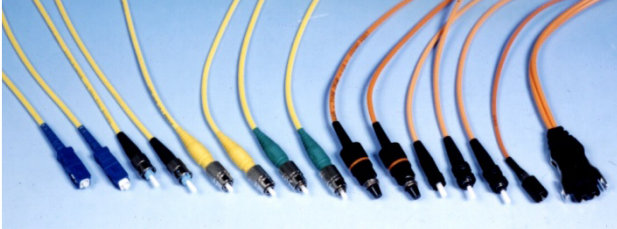


# FIBER OPTIC JUMPER CORD SERIES

## PRODUCT SPECIFICATION

## JC - JC - NM

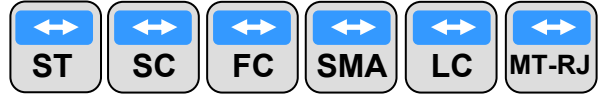


### DESCRIPTION

The ELIM Fiber optic jumper cord series provide connections between transmitter and receiver. The core and cladding will be free of scratches and chips, Polished to a fine finish. A properly prepared jumper cord represents low loss and maximum performance.

### APPLICATION

- .CCTV, ITV and traffic control System
- .CATV System
- .Security System
- .Process control and monitoring System



### FEATURES

- . Types : Single mode(9/125um), Multimode(62.5/125um)
- . Indoor use and both end optical connectors
- . Cord length : 3, 5, 10 and 30 meters ( option )
- . Types of connectors : ST, SC, FC, SMA, LC, MT-RJ ( option )
- . Typical mating loss : below 0.5dB

