

FIBER OPTIC ADAPTER SERIES



DESCRIPTION

본 제품은 광 콘넥타와 광 콘넥타간을 연결하는 어댑터로서, 단자함내의 콘넥타 PANEL 에 부착하여 사용한다.

APPLICATION

- .CCTV, ITV and traffic control System
- .CATV System
- .Security System
- .Process control and monitoring System

ST

SC

FC

SMA

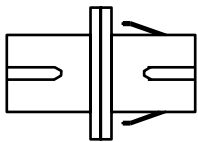
LC

MT-RJ

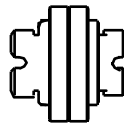
FEATURES

- 규격: 싱글모드 (9/125 μ m), 멀티모드 (62.5/125 μ m)
- 용도: 옥내용
- 광 커넥터 형태 : ST,SC,FC,SMA,LC,MT-RJ (OPTION)
- 손실 : 0.5dB 이하

SC Adaptor



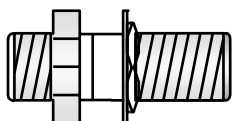
FC Adaptor



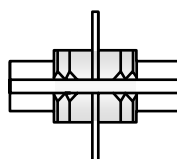
ST Adaptor



SMA Adaptor



D4 Adaptor



H/S Tube

